

**Model: FG50AT-10
FD50AYT-10**

CX50 SERIES

STANDARD SPECIFICATIONS

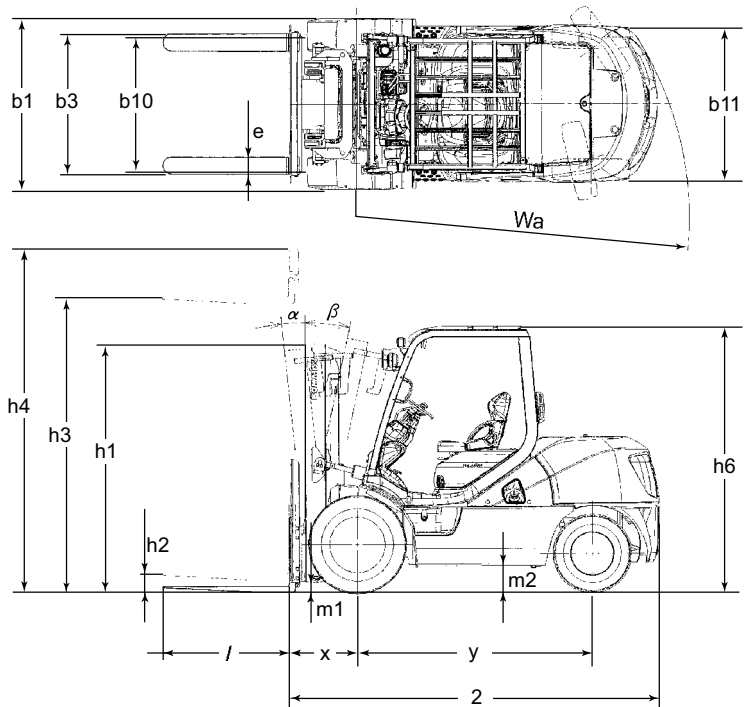
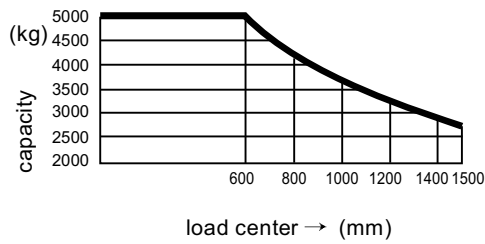
Characteristics	1.2	Model	Manufacturer's Designation		FG50AT-10	FD50AYT-10		
	1.3	Power Type	Electric, Diesel, Gasoline, LPG, Cable		Gasoline	Diesel		
	1.4	Operation Type			Sitting	Sitting		
	1.5	Rated Capacity	Q	Rated Capacity	kg	5000	5000	
	1.6	Load Center	c	Rated Load Center	mm	600	600	
	1.8	Load Distance	x	Front Axle Center to Fork Face	mm	575	575	
	1.9	Wheelbase	y		mm	2000	2000	
	Weight	2.1	Service Weight			kg	7240	7260
		2.2	Axle Loading	Loaded	Front	kg	10785	10805
2.2.1		Rear			kg	1455	1455	
2.3		Unloaded		Front	kg	2850	2870	
2.3.1				Rear	kg	4390	4390	
Tyre	3.1	Tyre Type			Pneumatic	Pneumatic		
	3.2	Tyre Size	Front		300-15-18PR(I)	300-15-18PR(I)		
	3.3		Rear		7.00-12-14PR(I)	7.00-12-14PR(I)		
	3.5	Number of Wheel	Front/Rear (x=driven)		2x/2	2x/2		
	3.6	Tread, Front	b10		mm	1150	1150	
	3.7	Tread, Rear	b11		mm	1120	1120	
	Dimensions	4.1	Tilting Angle	∂/β	Forward/Backward	degree	6/12	6/12
4.2		Mast Height, Lowered	h1	2-stage Mast	mm	2205	2205	
4.3		Std. Free Lift	h2	2-stage Std. Mast, from Ground	mm	145	145	
4.4		Std. Lift Height	h3	2-stage Std. Mast, from Ground	mm	3000	3000	
4.5		Mast Height, Extended	h4	2-stage Std. Mast	mm	4345	4345	
4.7		Height, Overhead Guard	h6		mm	2250	2250	
4.19		Length, with Std. Forks	l1		mm	4405	4405	
4.20		Length, to Fork Face	l2		mm	3185	3185	
4.21		Width, at Tyre	b1	Single	mm	1450	1450	
4.22		Forks	s/e/l	Thickness x Width x Length	mm	55x150x1220	55x150x1220	
4.23		Fork Carriage Class	ISO 2328, Type A/B/no			Class4, A	Class4, A	
4.24		Width, Fork Carriage	b3		mm	1270	1270	
4.31		Ground Clearance	m1	Under Mast	mm	145	145	
4.32			m2	at Center of Wheelbase	mm	220	220	
4.33		Right Angle Stacking Aisle	Ast with L1000 x W1200 pallet		mm	4645**	4645**	
4.34	Ast with L1200 x W800 pallet		mm	4645**	4645**			
4.35	Turning Radius	Wa		mm	2850	2850		
Performance	5.1	Travel speed (FWD)	Loaded, 1st/2nd		km/h	14.5/23.5	14.5/23.0	
			Unloaded, 1st/2nd		km/h	15.5/24.5	15.0/24.0	
	5.2	Lifting Speed	Loaded		mm/s	440	455	
			Unloaded		mm/s	440	480	
	5.3	Lowering Speed	Loaded		mm/s	500	500	
			Unloaded		mm/s	500	500	
	5.6	Max. Drawbar Pull	Loaded		kN	28	31	
	5.8	Max. Gradeability	Loaded		%	25	28	
5.10	Service Brake	Operation/Type			Foot/Hydraulic	Foot/Hydraulic		
5.11	Parking Brake	Operation/Control			Hand/Mechanical	Hand/Mechanical		
5.12	Steering	Type			FHPS	FHPS		
6.4	Battery	Voltage/ Capacity at 5-hour rating		V/ah	12/38	12/64		
I.C. Engine	7.1	Make				NISSAN	KOMATSU	
		Model				EBT-TB45-1A*	S4D95LE-3	
	7.2	Rated Output, SAE net			kW	62.5	58.8	
	7.3	Rated RPM			min-1	2400	2350	
	7.3.1	Max. Torque, SAE net			Nm@min-1	272@1600	286@1600	
	7.4	No. of Cylinder/Displacement			cm ³	6-4478	4-3260	
7.6	Fuel Tank Capacity			Ltr	98	98		
Others	8.2	Relief Pressure for Attachment			bar	206	206	
	8.2.1	Hydraulic tank Capacity			Ltr	72	72	
	8.7	Transmission				TORQFLOW	TORQFLOW	

Note*: EBT-TB45-1A for Gas, EBT-TB45-2A for G/LP Dual fuel. EBT-TB45-3A for LPG specification.

** : Add clearance

FG50AT-10, FD50AYT-10

● CAPACITY CHART



● STANDARD EQUIPMENT

- 3.0mH 2-stage free view mast
- Load backrest
- Overhead guard (ANSI/ISO)
- FHPS (Full Hydraulic Power Steering)
- Dual floating structure
- Torque converter oil cooler
- Neutral safety mechanism
- Variable displacement pumps (CLSS; Closed-center Load Sensing System)
- Wet disc brake with positive cooling system
- Tiltable steering column
- New operator's seat with suspension
- 3-way catalytic system (Gasoline)
- Assist grip
- Floor mat
- Safety checker (Hour meter/Water temperature gauge/Fuel gauge/Neutral indicator/Engine oil pressure warning lamp/Charge warning lamp)
- Head lights
- Turn signal lamps
- Back-up buzzer
- Wide angle center mirror
- Drawbar pin
- Rear combination light
- Horn

● OPTIONAL EQUIPMENT

- Front glass with wiper
- Steel cabin
- Canvas cabin
- Protective resin head guard cover
- Strobe lights (yellow/red)
- Digital load checker
- Heater
- Pre-cleaner
- Spark arrester
- Upward exhaust muffler
- Radiator screen
- LPG swing down bracket (LPG)
- Tilt cylinder boots
- Rear view mirror (pair)

CX50 SERIES

● MAST SPECIFICATIONS

2-stage Free View Mast

*mark is the standard mast

Max. Fork Height	Overall Height			Free Lift		Tilting Angle		Capacity at 600mm Load Center			Mast Weight
	Lowered	Extended		Without Load Backrest	With STD Load Backrest	Forward/Backward		FG50AT-10, FD50AYT-10			
		Without Load Backrest	With STD Load Backrest			Front Single Tyre	Front Double Tyre	Pneumatic Front Double Tyres	Pneumatic Front Single Double Tyres	Pneumatic Single Std. Tread	
mm	mm	mm	mm	mm	mm	degree	kg	kg	kg	kg	
3000*	2205	3995	4355	145	145	6/12	6/12	5000	5000	5000	1240
3300	2355	4285	4645	145	145	6/12	6/12	5000	5000	5000	+45
3500	2455	4485	4845	145	145	6/12	6/12	5000	5000	5000	+75
3700	2555	4685	5045	145	145	6/12	6/12	5000	5000	5000	+105
4000	2755	4985	5345	145	145	6/12	6/12	5000	5000	5000	+230
4300	2905	5285	5645	145	145	6/6	6/12	5000	5000	5000	+275
4500	3005	5485	5845	145	145	6/6	6/12	5000	5000	5000	+305
4700	3155	5685	6045	145	145	6/6	6/12	4750	4750	4000	+350
5000	3305	5985	6345	145	145	6/6	6/12	4750	4750	4000	+395
5500	3555	6485	6845	145	145	6/6	6/12	4750	4750	2900	+470
6000	3805	6985	7345	145	145	6/6	6/12	4750	4750	2200	+605

Without load backrest: reduce 45kg from mast weight.

2-stage Full Free View Mast

Max. Fork Height	Overall Height			Free Lift		Tilting Angle		Capacity at 600mm Load Center			Mast Weight
	Lowered	Extended		Without Load Backrest	With STD Load Backrest	Forward/Backward		FG50AT-10, FD50AYT-10			
		Without Load Backrest	With STD Load Backrest			Front Single Tyre	Front Double Tyre	Pneumatic Front Double Tyres	Pneumatic Front Single Double Tyres	Pneumatic Single Std. Tread	
mm	mm	mm	mm	mm	mm	degree	kg	kg	kg	kg	
3000	2205	4045	4355	1240	930	6/12	4800	4800	4800	1300	
3300	2355	4345	4655	1390	1080	6/12	4800	4800	4800	+50	
3500	2455	4545	4855	1490	1180	6/12	4800	4800	4800	+80	
4000	2755	5045	5355	1790	1480	6/12	4700	4700	4700	+225	

Lifting Speed (mm/s) Loaded/Unloaded [FG50AT-10]410/410, [FD50AYT-10]420/450 Load Distance 575mm
 Lowering Speed (mm/s) Loaded/Unloaded [FG50AT-10]425/405, [FD50AYT-10]425/405 Without load backrest:
 reduce 40kg from mast weight.

3-stage Full Free View Mast

Max. Fork Height	Overall Height			Free Lift		Tilting Angle		Capacity at 600mm Load Center			Mast Weight
	Lowered	Extended		Without Load Backrest	With STD Load Backrest	Forward/Backward		FG50AT-10, FD50AYT-10			
		Without Load Backrest	With STD Load Backrest			Front Single Tyre	Front Double Tyre	Pneumatic Front Double Tyres	Pneumatic Front Single Double Tyres	Pneumatic Single Std. Tread	
mm	mm	mm	mm	mm	mm	degree	kg	kg	kg	kg	
3700	2155	4810	5135	1205	880	6/6	4800	4800	4800	-85	
4000	2255	5110	5435	1305	980	6/6	4600	4600	4600	-45	
4300	2355	5410	5735	1405	1080	6/6	4600	4600	4600	1725	
4500	2455	5610	5935	1505	1180	6/6	4500	4500	4500	+45	
4700	2505	5810	6135	1555	1230	6/6	4500	4500	4500	+65	
5000	2605	6110	6435	1655	1330	6/6	4500	4500	4100	+105	
5500	2755	6610	6935	1805	1480	6/6	4400	4400	3100	+165	
6000	2955	7110	7435	2005	1680	6/6	4200	4200	2350	+330	
6500	3205	7610	7935	2255	1930	6/6	3800	3800	1750	+440	
7000	3455	8110	8435	2505	2180	6/6	2900	2900	1250	+605	

Lifting Speed (mm/s) Loaded/Unloaded [FG50AT-10]420/420, [FD50AYT-10]440/460 Load Distance 610mm
 Lowering Speed (mm/s) Loaded/Unloaded [FG50AT-10]435/415, [FD50AYT-10]435/415 Without load backrest:
 reduce 40kg from mast weight.